

# LTSCHP1W-B

교체용 LED 광원

## SPECIFICATIONS

광학적 특성			
광원의 색상, 피크 파장			blue, 460 nm
장치의 경격용량			
최소 DC 전압	(V)		12
최대 DC 전압	(V)		24
전력소비	(W)		< 2.5
Max 순방향 전류 (1)	(mA)		350
LED 경격용량			
순방향전압 (평균) (2, 3)	(V)		3.3
순방향전압 (최대) (2, 3)	(V)		4.00
최대 펄스의 흐름 (4)	(mA)		2000
기계적 특성			

## 노트

1. Used in continuous (not pulsed) mode.
2. At max forward current.
3. Tolerance is  $\pm 0.06V$  on forward voltage measurements.
4. At pulse width  $\leq 10$  ms, duty cycle  $\leq 10\%$  condition. Built-in electronics board must be bypassed (see tech info).
5. Shipped not assembled. See LTCLHP instructions manual.

## 적용가능한 제품들



LTCLHP 시리즈  
Telecentric 고성능 조명기

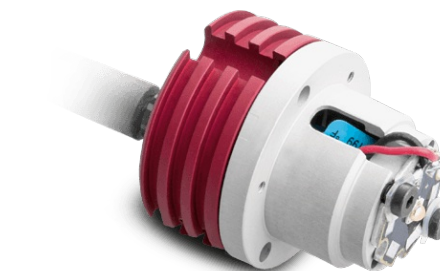
LTCLHP023-B	Telecentric HP illuminator, beam diameter 16 mm, blue
LTCLHP016-B	Telecentric HP illuminator, beam diameter 20 mm, blue
LTCLHP024-B	Telecentric HP illuminator, beam diameter 30 mm, blue
LTCLHP036-B	Telecentric HP illuminator, beam diameter 45 mm, blue
LTCLHP048-B	Telecentric HP illuminator, beam diameter 60 mm, blue
LTCLHP056-B	Telecentric HP illuminator, beam diameter 70 mm, blue
LTCLHP064-B	Telecentric HP illuminator, beam diameter 80 mm, blue
LTCLHP080-B	Telecentric HP illuminator, beam diameter 100 mm, blue
LTCLHP096-B	Telecentric HP illuminator, beam diameter 120 mm, blue

Electronics and cables  
Power supplies, power and interface cables

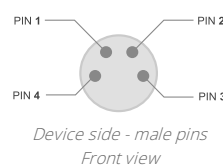
CB244P1500	Power cable, side 1 M8 connector straight, side 2 cable end - 2 m - type 1 labels
CB244P1500L	Power cable, side 1 M8 connector angled, side 2 cable end - 2 m - type 1 labels
LED1W-B	LTSCHP1W 시리즈를 위한 교체용 LED 광원, 블루

Optical accessories  
Replacement optics and mirrors

CPDPH01	Diffuser cap for LTCLHP illuminators
---------	--------------------------------------



## CONNECTION



## Pinout reference

PIN	FUNCTION
1	Earth
2	GND
3	LED Anode
4	Power supply (+12÷24 V)

